

# DS318

## Optical Flap Turnstile

SINGLE / BI-DIRECTION

# DaoSafe

## DATASHEET



## Description

- Optical flap turnstile is to control pedestrian entry or exit in restricted areas, usually used in high pedestrian traffic flow in both directions.
- The white tempered glass side panels with dazzling LED light which are more attractive and impressive, easily to catch pedestrian's eyes and enhance the artistry of the sites.
- The body is made of brushed stainless steel which is robust, rigid, anti-rust, waterproof and durable. The black tempered glass on the card panel which are firm and solid, not easy to be scratched.
- Waterproof: IP65 level, no afraid of water or rain. It is ideal for both indoor and outdoor settings.
- It has standard relay signal, which can be integrated with any kind of third-party access control system (e.g.: RFID, Fingerprint and Biometric reader device).
- In case of emergency, the arms will open automatically to allow free passage when power off.
- It support standard, can be combined with other disabled gates to form a wide passageway, wheelchair, and pedestrian with large luggage can pass.
- Application: suitable for any high-end sites, such as government building, chamber, bank, gym, hotel, shopping mall, office building and so on.

SAFETY  
LEVEL

AESTHETICS

COSTING

## Features

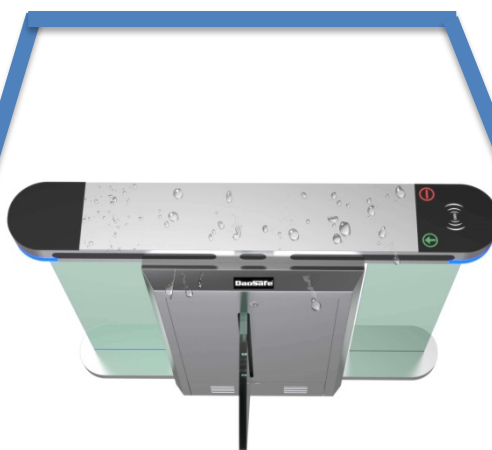


- ✓ Long-life performance, high operation dependability and fast response.
  - ✓ The whole system runs smoothly, low noise, no mechanical impact.
  - ✓ Single directional or Bi-directional is selectable.
  - ✓ Automatic reset function: flap arms will lock automatically within 5s (can be setting) if passenger delay to entry.
  - ✓ When power is off, flap arms will open automatically, which is complying with fire safety requirements.
  - ✓ LED indicator (red "—" means no entry; green → means entry).
  - ✓ Infrared sensor alarm functions, in case of illegal intrusion and reverse intrusion.
  - ✓ Anti-intrusion function, the turnstile is locked automatically until valid opening signal input.
  - ✓ Anti-reverse function, the turnstile alarms if someone wants to entry in the reverse direction.
- 
- ✓ Anti-trailing function, the turnstile alarms if someone wants to burst in without permission.
  - ✓ Anti-collision and anti-kick function, it designed with consolidated and more durable mechanism, will not break even someone collide it.
  - ✓ Mechanism self-protection: the arm will reset automatically if is off position. It's movement will not be broken or damaged even after hit.
  - ✓ It has the fastest open and close speed rate and can be adjusted.
  - ✓ Easy to install and maintain.
  - ✓ 3-year warranty support.

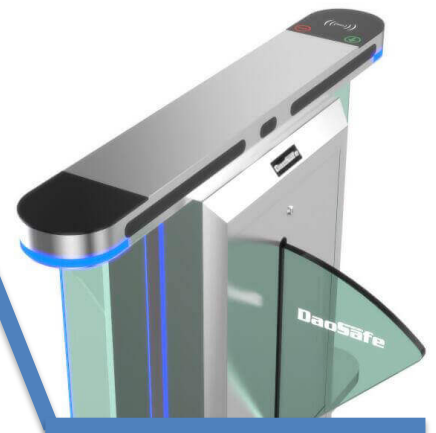
## FLAP TURNSTILE HIGHLIGHTS



Tempered glass swipe window



Waterproof no afraid of water or rain



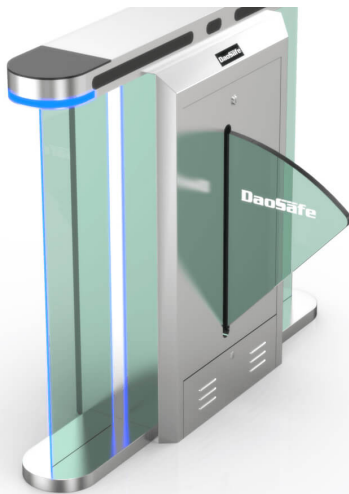
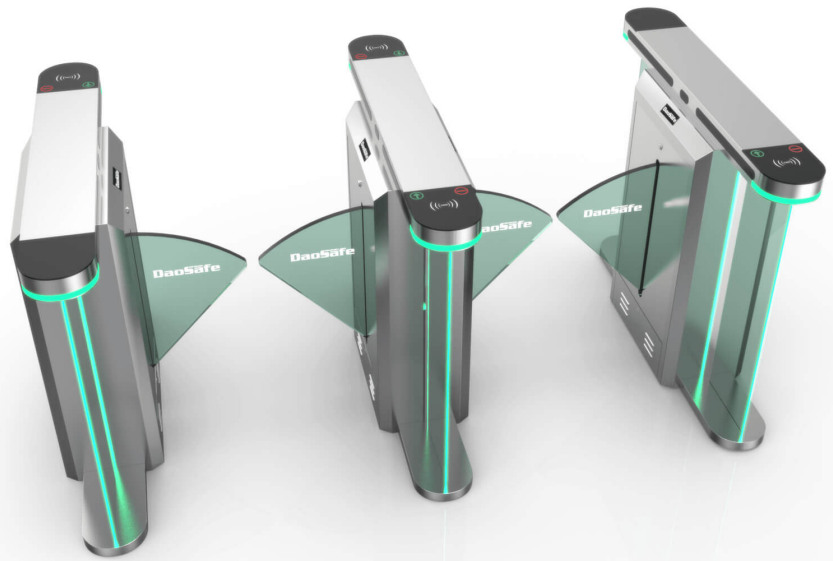
5 pairs of infrared, fast speed

# MODEL DS318

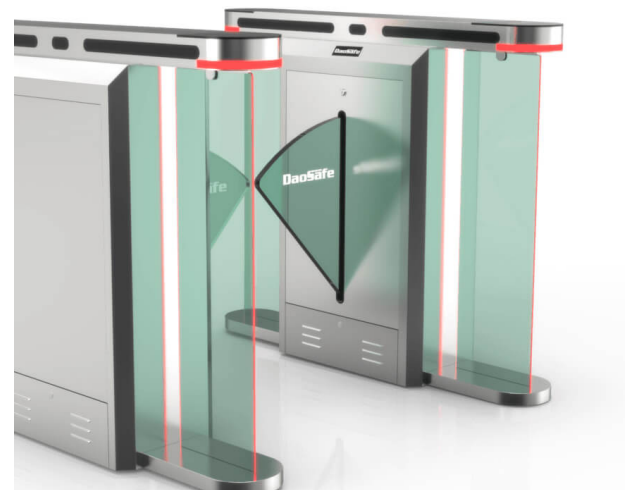
Anti-rust, Waterproof and Fast Speed (0.2s)

- The same appearance design as the swing gate, simple and modern.
- 5 pairs of infrared, fast speed
- The white tempered glass on the cabinet with impressive red, green and blue 3 colors lighting change.
- The black tempered glass on the card panel which are firm and solid, not easy to be scratched.
- Waterproof: IP65 level, no afraid of water or rain.

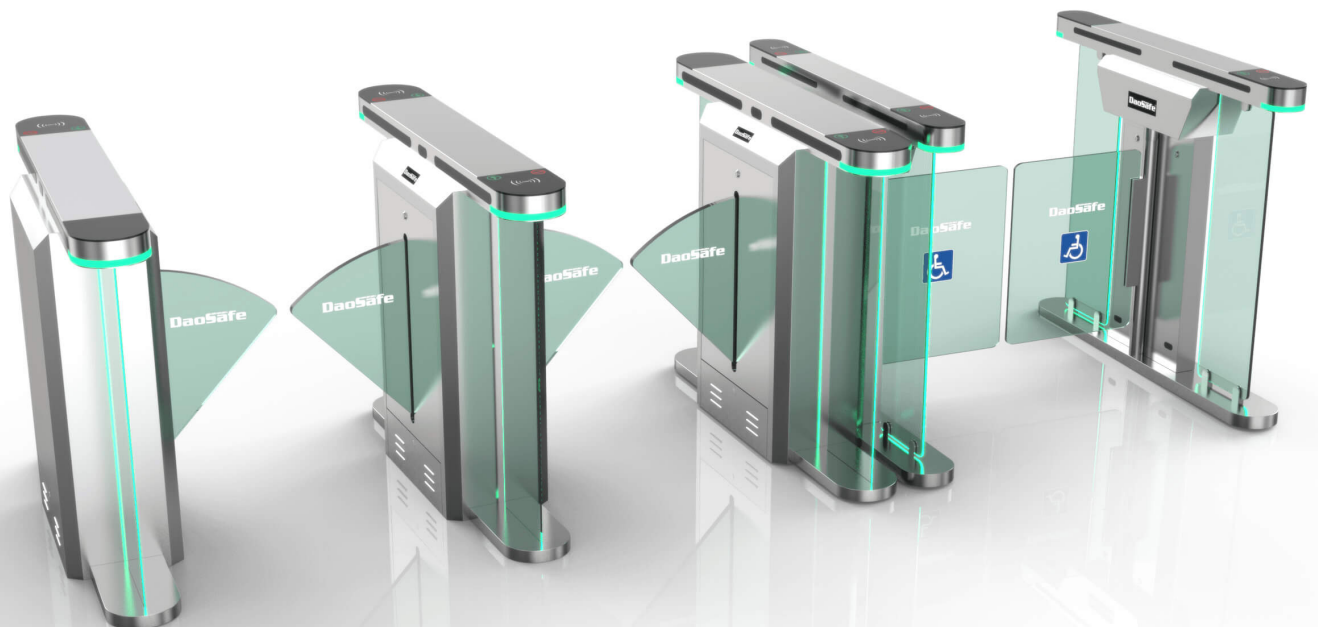
● Entry



● Under power



● No entry

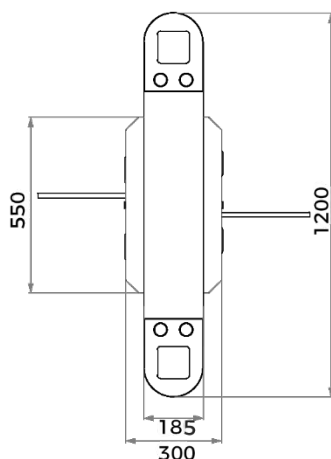


## Specification

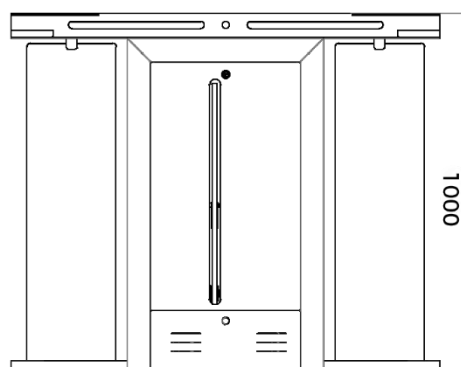
Model No.	DS318
Type	Optical Flap Turnstile
Brand	Daosafe
Framework Material	304 Stainless steel+ Plexiglas glass arm+ tempered glass side panels with dazzling LED light
Arm material	Plexiglas–transparency
Dimension	1200 *185 * 1000 mm
Net Weight	70kg/pcs (single core), 80kg/pcs (double core)
Passage Width	600 mm (standard), 900 mm(wheelchair)
Passing Direction	Single directional / Bi–directional
MCBF	12 million
Power Supply	AC220V/110V, 50/60Hz
Operation Voltage	24V DC
Power Consumption	40W
Operation Temperature	-20 °C – 75 °C
Operation Humidity	0 ~ 95% (No freeze)
Working Environment	Indoor / Outdoor (IP65)
Flow Rate	55–60 people per minute
LED Indicator	Two LED indicators on top: green “→” entry. red “—” no entry
Infrared Sensor	5 pairs (3 pairs on the top +2 pairs on the below)
Emergency	Automatic arm open when power off
Flexibility	Integrate with any access control

## Dimension

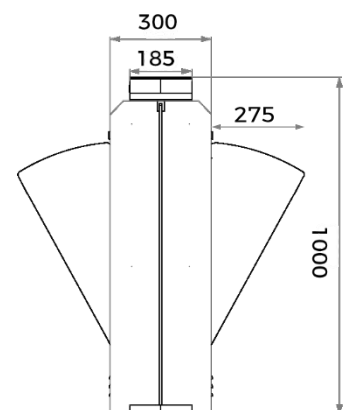
Top View



Lateral view



Front view



## WIDE RANGE INTEGRATION



- Face Recognition**  
 Dynamic face recognizes, non-contact and trendy solutions
- Barcode /QR scanner**  
 Connect with mini PC or access controller to use  
 Support phone or paper Barcode/QR
- RFID Card**  
 All kinds of RFID card reader, such as  
 Mifare, EM cards, HID card, Key Fob, Wristband...
- Biometric Device**  
 Support Fingerprint, RFID card, password  
 Popular and secure access control solutions
- Key Fob**  
 RFID type, mainly use in apartment
- Card Collector Machine**  
 The solution is mainly used in park, building for visitor
- Wristband**  
 RFID type, mainly used in swing pool and gym
- Coin Insert**  
 The solution is mainly for bus stations or toilet
- Wheel**  
 Integrated on turnstile for movable and portable
- Button**  
 Exit by freely passing/ push button
- 3rd Party Access Controller**  
 Any 3rd party access controller can integrate  
 with all our turnstiles

# DS318 Anti-rust and Waterproof

It is ideal for both indoor and outdoor settings



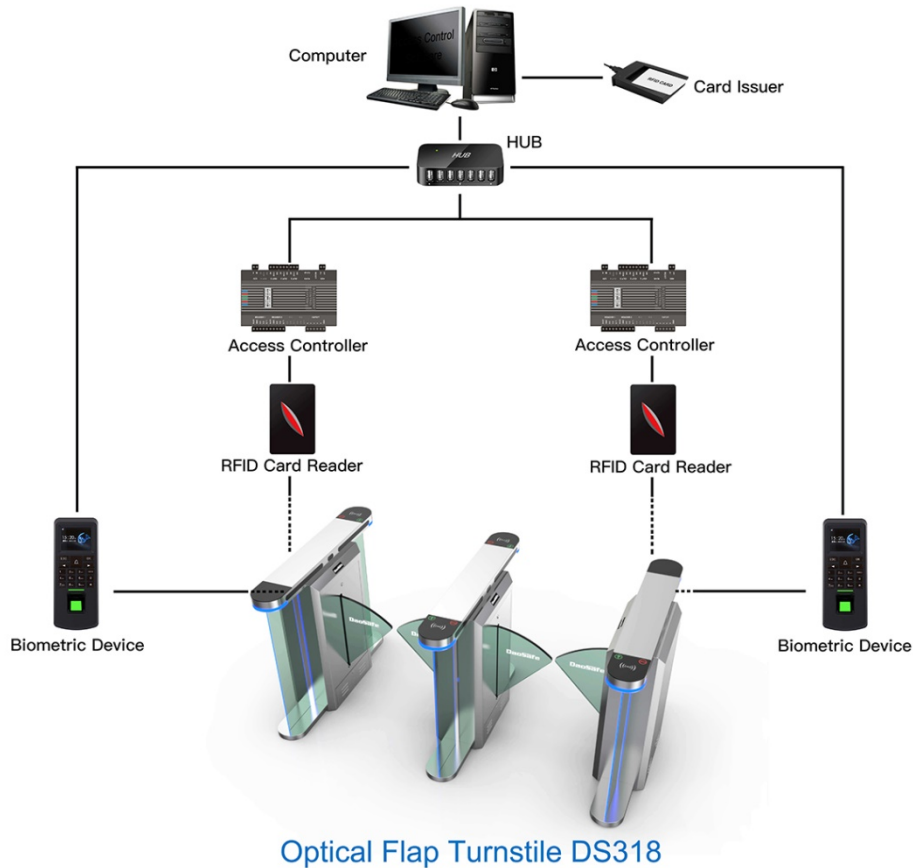
Optical Flap Turnstile DS318 with IP65 level, waterproof, no afraid of water or rain. Which is provides an artistic and high artwork solution for access control solution at sites with high aesthetic requirements, such as office, hotel, bank and chamber...

## DS318 Working With

## Disabled Passage Solution



# System Integration Figure



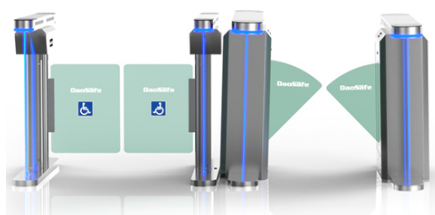
## REMARK:

- The turnstile circuit board support to work with any relay signal, and support to integrated with any 3rd party access control system: RFID, BIOMETRIC, QR/BARCODE and so on.
- Multiple access controller board can be connected by TCP/IP through net cable, control by central computer.
- The turnstile circuit board is also with RS232 output, it can connect with mini PC. Turnstile will open once received simple code by computer, which is suitable for the complicated like ticketing system solution.

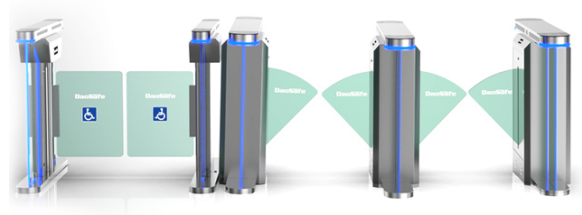
The most special feature of flap turnstile is faster open and close speed than other turnstile gates, normally 55-60 persons per minute. So it's perfect for the sites with big visitors flow rate.



One Lane



Two Lanes with Handicapped Access



Three Lanes with Handicapped Access